

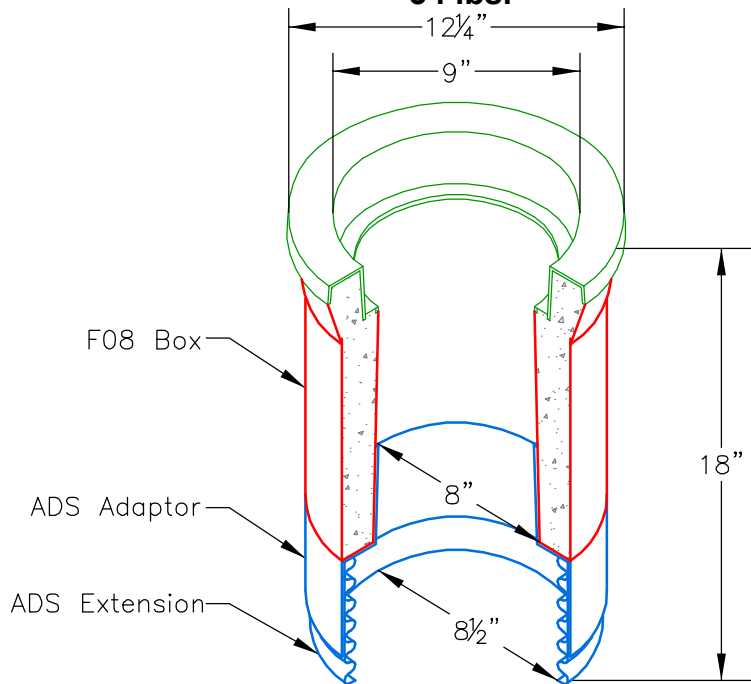
B.L. WALLACE-DISTRIBUTOR, INC.

8542 La Salle St., Cypress, CA 90630 Phone (714)761-2071 FAX (714)761-0460
www.blwallace.com

- Etched polypropylene face
- Face anchored in concrete
- Ultra-violet inhibitor
- Exceeds ASTM-D1693 Standards for Environmental Stress Cracking Resistance

CURB VALVE BOX No. F14BOX

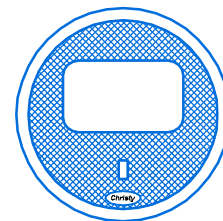
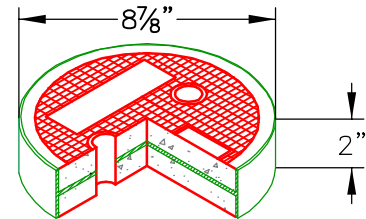
34 lbs.



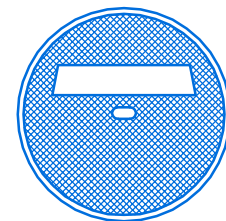
REINFORCED CONCRETE LID

No. F08R

8 lbs.



FL08D



F08C

A high density reinforced concrete box with non-settling shoulders positioned to maintain grade and facilitate back filling. Approximate dimensions and weight shown.

Ordering Code	Item	Approx. Shipping Weight	Description
F14BOX	BOX	34	F14 Curb Valve Box (8" I.D. x 18" high)– F08 Box with 6" ADS Extension & Adapter
F08R	LID	8	Reinforced concrete with plastic ring
F08C	LID	8	Cast iron
FL08D	LID	2	Fibrelyte lid, non-concrete
F08XAD	ADAPTER	1	ADS snap adapter
F14XP6	EXTENSION	1	ADS 6" plastic
F14XP120	EXTENSION	11	ADS 10' plastic



F14 BOX (STANDARD)

FILE NAME: F14_ISO

ISSUE DATE: January, 2009

F14 CURB VALVE BOX

8" I.D. x 18"

