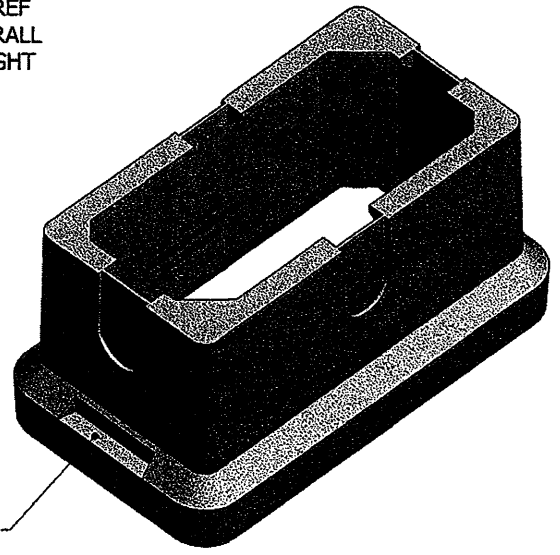
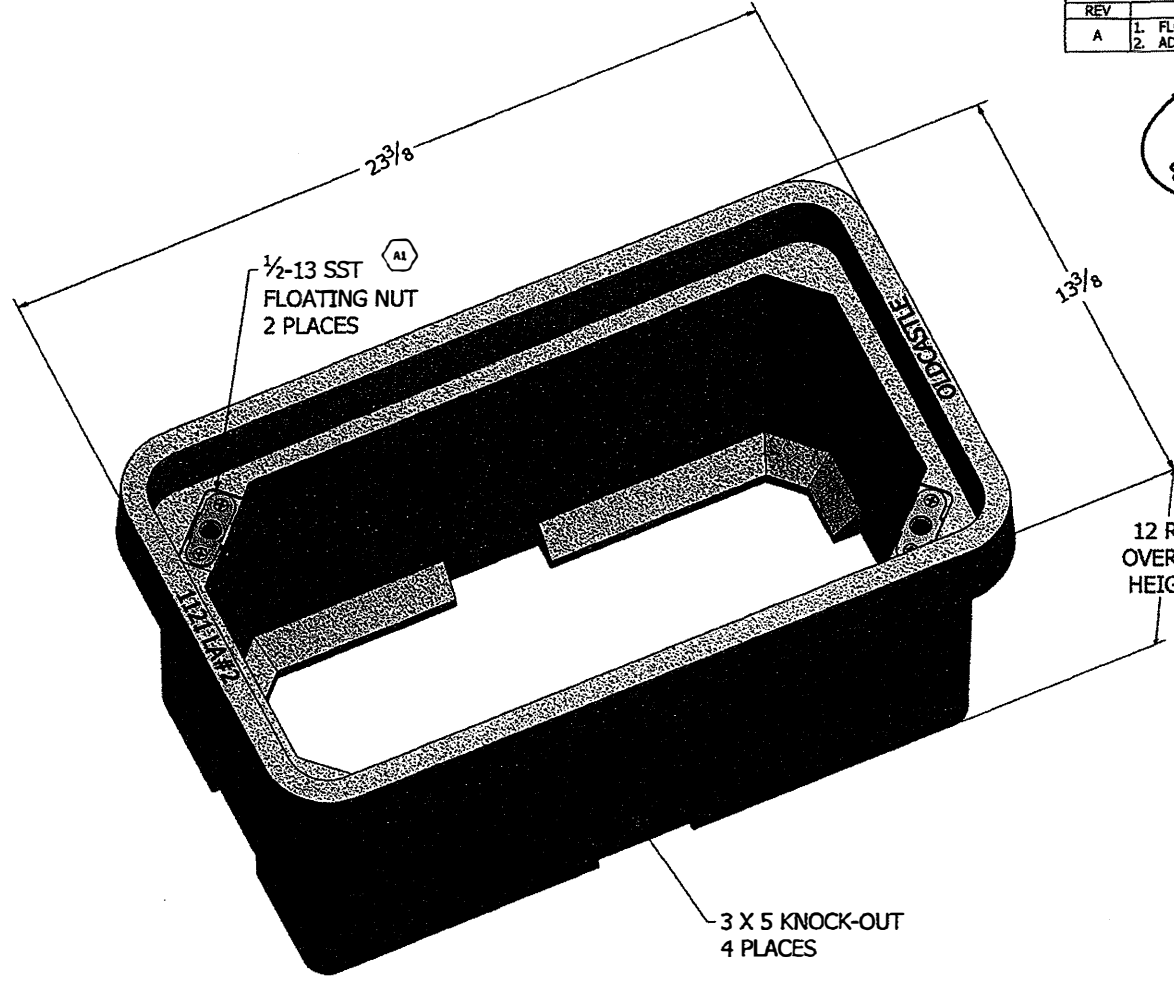
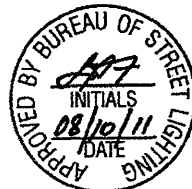


REVISION HISTORY				
REV	DESCRIPTION	REV BY	DATE	APPROVED
A	1. FLOATING NUTS CHANGED FROM 3/8-16 TO 1/2-13	J DENNER	7/22/2011	
	2. ADDED DATE OF MANUFACTURE TO BOX			

COMPLIES WITH TIER 22 SPECIFICATIONS PER ANSI/SC1E 2007



CUSTOMER FORMAT DRAWING

EST. WEIGHT: 40 LBS

MATERIAL: POLYMER CONCRETE, GRAY

MATERIAL PROPERTIES		
THE FOLLOWING MATERIAL PROPERTIES FOR POLYMER CONCRETE PRODUCTS WERE ESTABLISHED THROUGH INDEPENDENT THIRD PARTY TESTING:		
COMPRESSIVE STRENGTH	ASTM C 579	≥ 11,000 PSI
FLEXURAL STRENGTH	ASTM C 580	≥ 2,500 PSI
MODULUS OF RUPTURE	ASTM C 99	≥ 3,000 PSI
WATER ABSORPTION	ASTM C 97	≤ 0.25%
CHEMICAL RESISTANCE	ASTM D 543	RESISTANT, ≥ 75% RETENTION
PHYSICAL PROPERTIES		

UNLESS OTHERWISE SPECIFIED, ALL DIMENSIONS ARE IN INCHES. TOLERANCES:
 .XXX = ± .005
 .XX = ± .010
 .X = ± .030
 FRACTION = ± 1/16
 ANGLE = ± 1°

THIS DOCUMENT IS THE PROPERTY OF OLDCASTLE PRECAST, INC. IT IS SUBMITTED FOR REFERENCE PURPOSES ONLY AND SHALL NOT BE USED IN ANY WAY INVIOLATING TO THE INTERESTS OF SAID COMPANY.
 COPYRIGHT © 2011 Oldcastle Precast, Inc. All Rights Reserved.

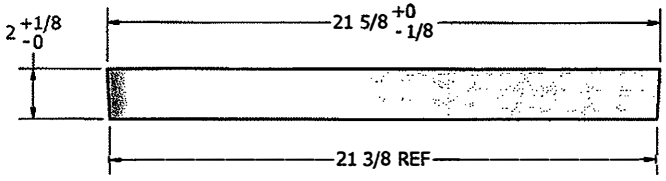
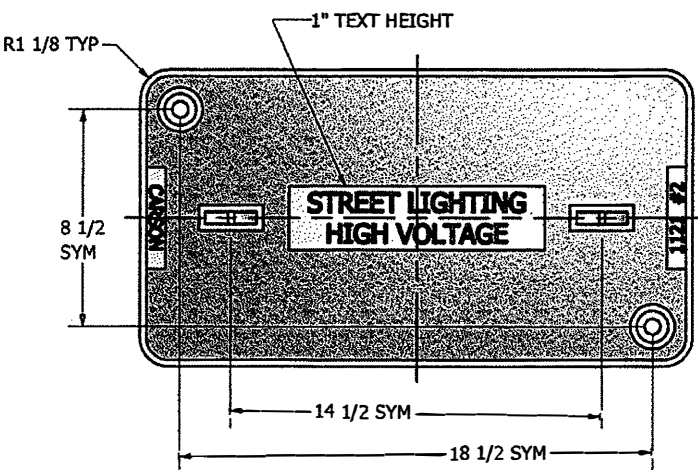
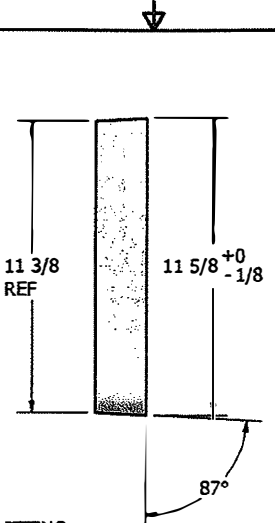
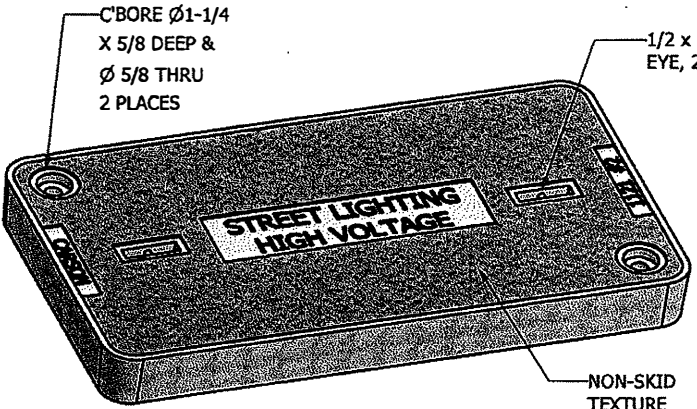
DRAWN J DENNER	7/22/2011		TITLE
CHECKED T DANG	7/25/2011		1121-12 PC BODY GRAY LA#2, 4x KNOCKOUT 2x 1/2-13 FLOATING NUT
QA		SIZE	REV
MFG		C	A
APPROVED		DWG NO	SCALE
		11212001	SHEET 1 OF 3

POLYMER CONCRETE MATERIAL PROPERTIES:

The following Material Properties for Polymer Concrete Products were established through independent third party testing:

Compressive Strength	ASTM C 579	≥ 11,000 psi
Flexural Strength	ASTM C 580	≥ 2,500 psi
Modulus of Rupture	ASTM C 99	≥ 3,000 psi
Water Absorption	ASTM C 97	≤ 0.25 %
Chemical Resistance	ASTM D 543	Resistant, ≥ 75% retention physical properties

COMPLIES WITH TIER 15 SPECIFICATIONS PER ANSI / SCTE 2007



MATERIAL: POLYMER CONCRETE, GRAY

CUSTOMER FORMAT DRAWING
EST. WEIGHT: 26 LBS (LIGHTWEIGHT)

UNLESS OTHERWISE SPECIFIED
ALL DIMENSIONS ARE IN INCHES
TOLERANCE:
.XXX = +/- .0005
.XX = +/- .005
.X = +/- .050
FRACTION = +/- 1/8
ANGLE = +/- 1°

THIS DOCUMENT IS THE PROPERTY OF OLDCASTLE PRECAST, INC. IT IS SUBMITTED FOR REFERENCE PURPOSES ONLY AND SHALL NOT BE USED IN ANY WAY INJURIOUS TO THE INTERESTS OF SAID COMPANY. COPYRIGHT © 2008 Oldcastle Precast, Inc. All Rights Reserved		 	
DRAWN TDang	12/18/2008	TITLE 1121 FLUSH LPC COVER (LA #2) GRAY STREET LIGHTING HIGH VOLTAGE 2x BOLT PROV 2x LIFTING EYE	
CHECKED NTD	2/8/2010	SIZE B	DWG NO 11214278
MFG Ryan Wade	2/8/2010	SCALE	REV
APPROVED John K. Pickrell	2/8/2010	SHEET 1 OF 1	